

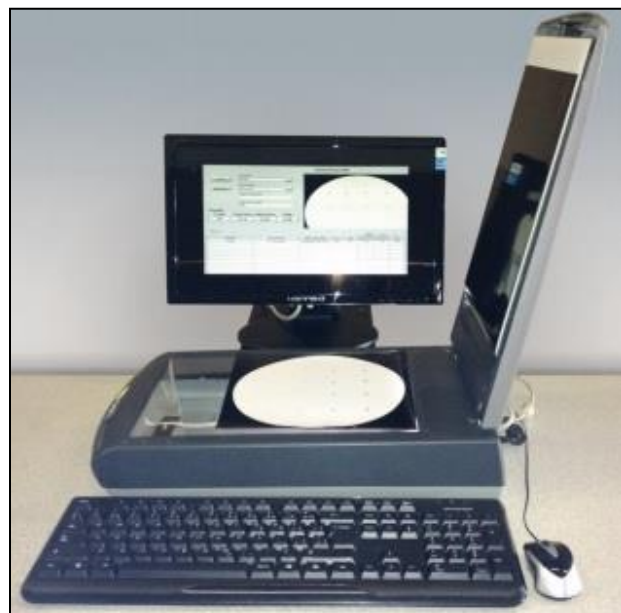


Production Test Method - Quick test with little training required.

The DirstScan™ 100 is specifically designed to be used in conjunction with the Pulmac Master Screen to generate a relative dirt count on screened dirt displayed on a 22 cm in diameter white filter paper. Depending on pulp and application a 75 um, 100 um, or 150 um slotted screen plate may be used.

Benefits:

The DirstScan™ 100 will generate simple and effective dirt data for feedback to production operators for dirt optimization efforts. The DirstScan100 is easy to set up, easy to train and simple to interpret data.



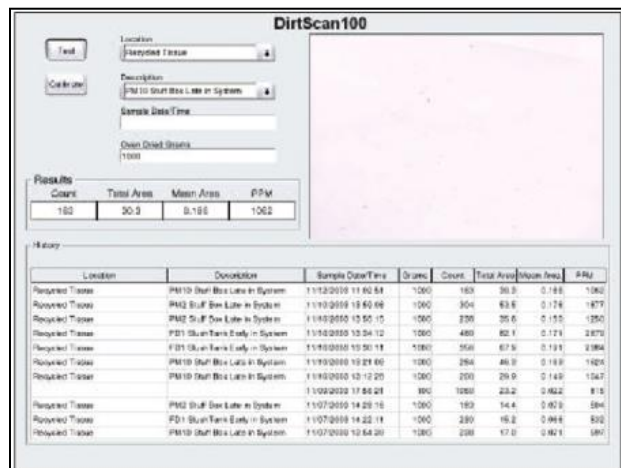
System Features:

INPUT

- Enter location: Pop up scroll to location setting or add new location.
- Enter Description: Pop up scroll to description or add new description.
- Enter Time/Date: Enter or use default of current time/date.
- Enter sample size: Data will then be normalized to 1 kg or use default of 1000 g.

OUTPUT

- Current test data of “Count”, “Total Area”, “Mean Area”, “PPM” is prominently displayed.
- Image of current scan is displayed.
- Last 11 test results are displayed.



DirstScan™ 100 screenshot of monitor before running a test.

Calibration check using supplied standard. Check for repeatability associated with changes in lighting, software, scanner mechanics, lens cleanliness, and other changes in hardware that influence test results.

10 - 11 Colrado Street
Hillam, Victoria 3803 Australia
Ph: +61 3 9708 6885
Fax: +61 3 9708 6770