

Model Definition *example:*

UE34300kN

| ·U· | | ·E· | | ·3· | | ·4· | | ·300· | |
|--------|-------------|--------|------------|--------|--------------------|--------|---------------------|--------|--------------------|
| symbol | Testing | symbol | Load drive | symbol | Machine type | symbol | Display or control | symbol | Load Capacity |
| U | Universal | M | Manually | 1 | Single Benchtop | 1 | Mechanical indicate | kN | For Motor drive |
| T | Tensile | E | Motor | 2 | Double Benchtop | 2 | Digital indicate | ton | For Hydraulic type |
| C | Compression | H | Hydraulic | 3 | Double Floor Stand | 3 | Computer indicate | | |
| | | | | | | 4 | Computer Servo | | |

Load Cell

- High Precision force value sensor
- 0.4% to 100% test range of full capacity
- High overloading range protection
- Linearity within 0.05%

Rotary Encoder

- Optical-electric Pulse digital output
- Test Movement of Machine loading crosshead
- Resolution of reading 0.01mm
- Used as deformation value for some material tesseed

USB Remote

- Connect to the PC by USB
- With full function button for whole test procedures.
- Loading Speed indicating in Panel
- Can be put any location by Magnet Chuck base.

Software

- Used in all popular Windows OS.
- Multi-language Supported by order
- Excel test report
- Microsoft Access Data base supported
- Multi-curve supported for test data.
- Rp0.2, Rt0.5 calculated automatically
- User programmable and parameter settable for all different test stardard.
- Calibrating Automatically.

Control Card

- PCI or PCI-E Slot
- Double input channel of Resolution of 1/300000 A/D
- Two digital input channel.
- 4 pair digital bit input and 4 pair bit output
- Pulse out put to Servo Driver
- Load, Deformation, Displacement 3 close loop control

Emergency Switch

- Equipment stop action and software alarm when triggered

Servo Motor

- AC servo motor drive ball screw loading
- Low noise
- Accurate loading speed and loading position

Extensometer

- High precision for Deformation sensor
- 0.4% to 100% test range of full capacity
- 5,10,25,50,100,200,250mm Gauge length selectable
- 1%, 5%, 10%, 25%, 50% deformation range of gauge length
- Large Deformation extensometer optional part for Plastic, Rubber and leather.

Limited Switch

- Electronic upper and lower crosshead switch
- Protect operator and equipment
- Software indicating when triggered
- Easily set the protection position

Specifications:

| Model | UE1401/02/05 | UE2401/02/05/10/20 | UE3450/100 | UE34200 | UE34300 |
|-------------------------------------------------------|------------------------------------------------------|--------------------|---------------------------------|---------------|---------------|
| Maximum force(kN) | 1/2/5 | 1/2/5/10/20 | 50/100 | 200 | 300 |
| Machine type | Single | Double | Floor | Floor | Floor |
| Measuring range of force (kN) | 0.4%--100%F.S | | | | |
| Resolution of force | 1/300000 of maximum force | | | | |
| Accuracy of displacement measuring | ±0.5% | | | | |
| Resolution of displacement | 0.1 μm | | | | |
| Accuracy of deformation measuring | ±0.5% | | | | |
| Speed range of displacement control | 0.01-500mm/min (Max 1000mm/min as special order) | | | | |
| Speed range of force control | 0.005-5% F.S / S | | | | |
| Speed range of deformation control | 0.005-5% F.S/S | | | | |
| Range of constant displacement, force and deformation | 0.5%-100% F.S | | | | |
| Speed controlling accuracy | ≅±1.0% of the set value | | | | |
| Valid tension testing space(mm) | 800 | 800 | 650 | 600 | 600 |
| Compression testing space(mm) | 900 | 900 | 900 | 1000 | 1000 |
| Valid width between columns(mm) | / | 400 | 600 | 580 | 600 |
| Tension sample clamping (mm) | Flat grips | 0~20 | 0~14 | 0~20 | 0~20 |
| | Round grips | / | Ø4~14 | Ø4~22 | Ø9~26 |
| Power supply | 1P~220V, 1-3 kW, 50/60Hz | | 3P~380V/220V, 4-7.5 kW, 50/60Hz | | |
| Working environment | Room temperature 10 C ~ 40 C , relative humidity≤90% | | | | |
| Over dimension without PC table (mm) | 600×420×1800 | 830×550×1950 | 1050×800×2250 | 1150×870×2450 | 1250×900×2650 |
| Weight(Kg) | 300kg | 600kg | 1500kg | 1800kg | 2000kg |



UE1401/02/05



UE2401/02/05/10/20



UE3450/100/200/300

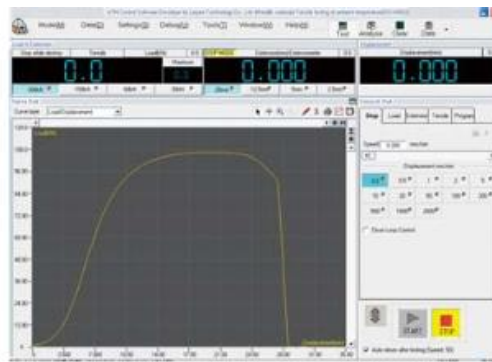


Control System:

- High accuracy Load cell, Encoder and optional extensometer to test the force, displacement and extension. Reading resolution can be 1/300000 of full range. Computer 3 close-loop control testing mode of load, displacement and extension.
- Large Extension and Digital gauge input channel for special test of deformation.
- Speed control from 0.01 to 500mm/min (special 1000mm/min) by servo motor.
- PCI computer control card to get the test value and control the servo motor
- Multi-languages supported, Data saves and transports to Microsoft Words, Excel.
- Database function, allow customer define test method, real-time test point value, value result formula and test report format.
- Multi sensor supported. Max 4 load cell , 4 strain gauge extensometer, 1 large deformation extensometer and 1 digital gauge can be defined.
- Metric and British unit exchanging supported mm, N, KN, kg and inches, lbs and pound.
- Calibration automatically and easily
- Two grade of user administrate system for common operator and system administrator
- Remote controller adjusts the machine crosshead before test and operates the test conveniently.
- Support different version of Microsoft windows OS of WinXP, Vista, Windows 7 etc.



CONTROL CARD



SOFTWARE



USB REMOTE

Standard Accessories:

- High accuracy Wedge Tension Grips
- Compression Plate
- 3-Point Bending accessories
- Installed: Encoder, Load Cell, Servo Motor and Controller
- Extensometer
- DSP PCI Control card
- Installation tools
- PC and Printer.



Optional Accessories List:



Wedge Tension 1



Wedge Tension 2



Pneumatic Tension



Flat Tension



Film Tension



Opposite Peeling



Thread Tension 1



Thread Tension 2



Bolt Tension



Nail Withdraw



3-Points Bend



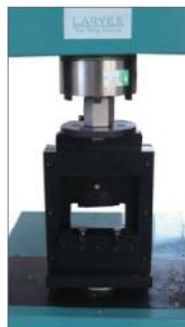
Shear



4-Points Bend



Compression Plate



Wood Shear



Wood Bending