

Cutting Dies – Tool Steel

Model C0024

a measurable difference...

IDM[®]

instruments

The Tool Steel Cutting Dies are used for the cutting of plastics, paper, textiles and rubber samples. They can be used along with IDM cutting presses for sample preparation.

Applications:

- Cardboard
- Foam
- Paper
- Plastic
- Rubber

Features:

- Able to be resharpened
- Longer service life than ruler dies

Standards:

- BS 2782-3
- AS 1683.11
- AS 2282.7
- ASTM D470
- ASTM D1004
- ASTM D1822
- ASTM D638
- ISO 34-1
- ISO 527
- ISO 6259
- K6301
- ASTM D882
- AS 1301.404
- AS 1180.2
- ASTM D412
- ASTM D624
- ASTM 1660.2
- ASTM D3574
- AS 1145
- ISO 37
- ISO 1798
- K6251
- AS/NZS 1660.2.3

- * Please specify which cutting die is required
- * Refer diagrams below to select type
- * Supply IDM with specifications for custom die

Options:

- Custom Dies – on request
- Cutting Die Adaptors
- Cutting Press
- Certification

Dimensions:

- Refer diagrams below

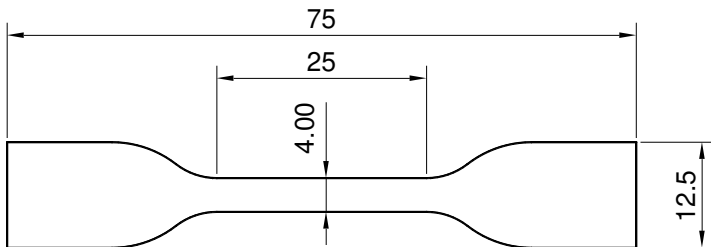


Can be used with the following Cutting Presses



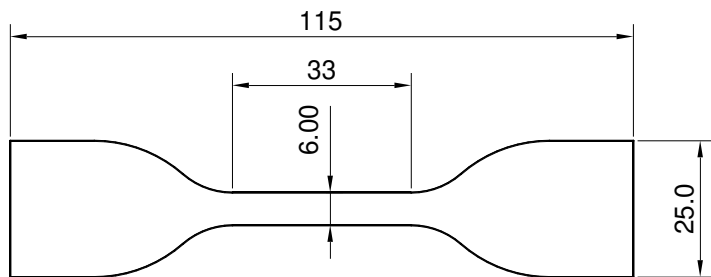
Cutting Die Adaptor

All dimensions in mm



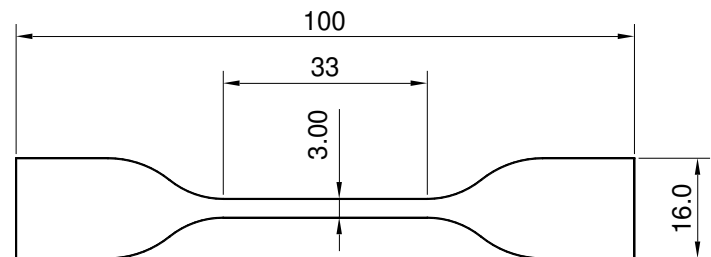
C0024 – Type A

- ISO 37-Type 2
- ISO 527-2-Type 5A
- AS 1145-Type 5A
- K6251-Type 6
- AS/NZS 1660.2.3
- DIN53504



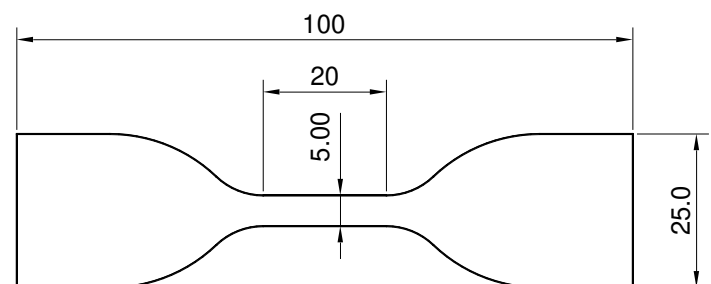
C0024 – Type B

- ASTM D412-C
- ISO 6259-3-Type 2
- K6251-Type 5
- ISO 37 – Type 1
- ISO 37-1 Type 2
- ISO 527-3 – Type 5
- BS 2782-3 (Method 320A)
- AS 1145.3 – Type 5
- DIN53504
- ASTM D882



C0024 – Type C

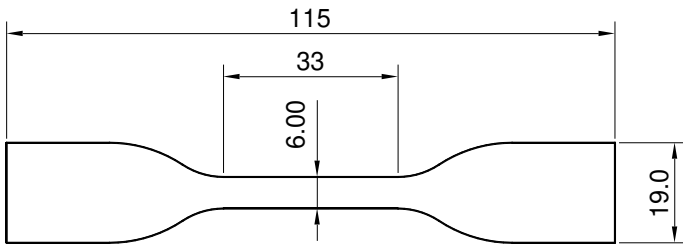
- ASTM D412-D



C0024 – Type D

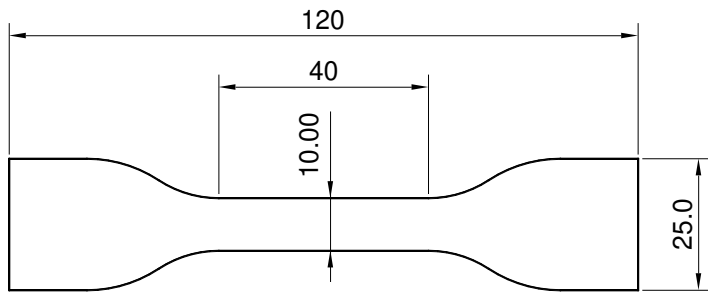
- JIS K6301-Type 3
- K6251- Type 3
- ISO 37 – Type 1A

All dimensions in mm



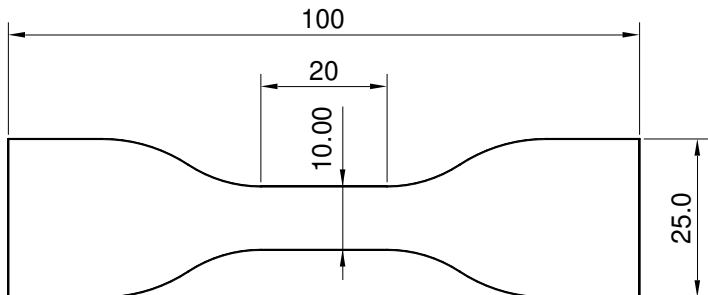
C0024 – Type E

- ASTM D638-02a-Type 4
- ASTM D6693



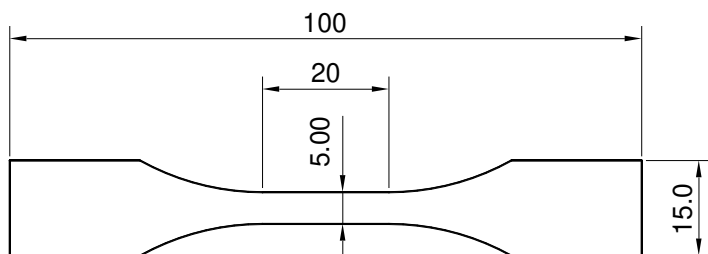
C0024 – Type F

- JIS K6301-Type 1



C0024 – Type G

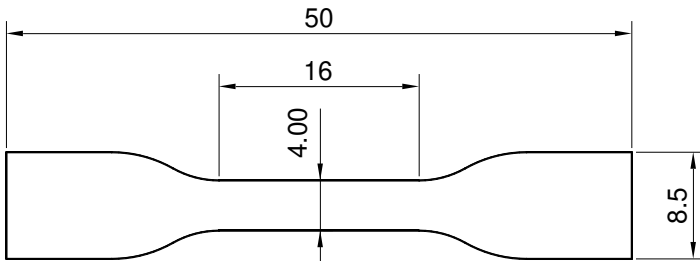
- JIS K6301-Type 2



C0024 – Type H

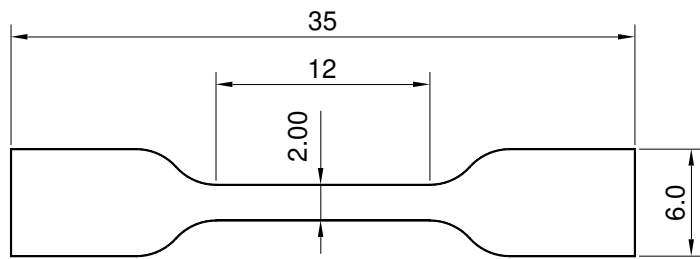
- JIS K6301-Type 4

All dimensions in mm



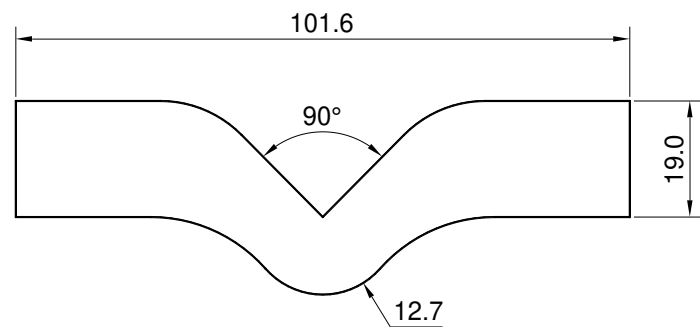
C0024 – Type I

- ISO 37 – Type 3
- AS/NZS 1660.2.3
- DIN 53504



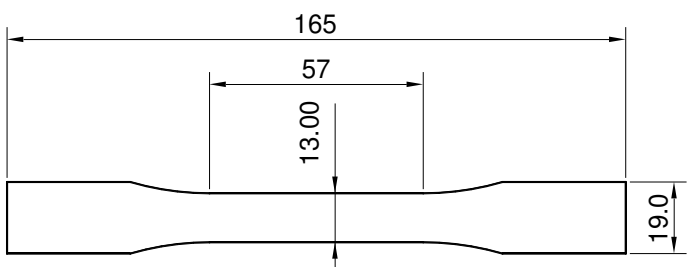
C0024 – Type J

- ISO 37 – Type 4
- ISO 527-2 – Type 5B



C0024 – Type K

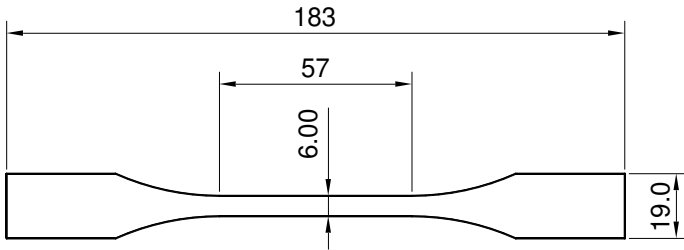
- K6301- B
- ASTM D624 – Type C
- ASTM D1004-03
- DIN ISO34-1



C0024 – Type L

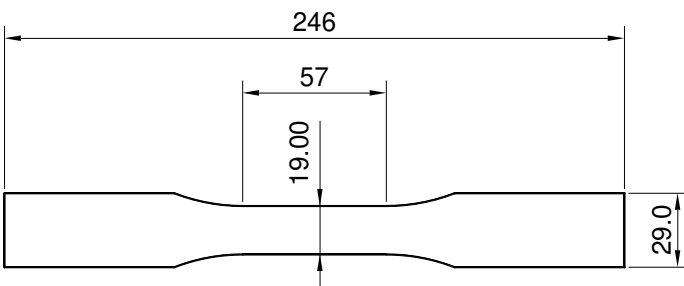
- ASTM D638-02a-Type 1

All dimensions in mm



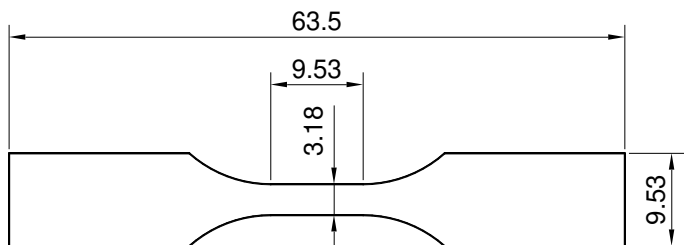
C0024 – Type M

- ASTM D638-02a-Type 2



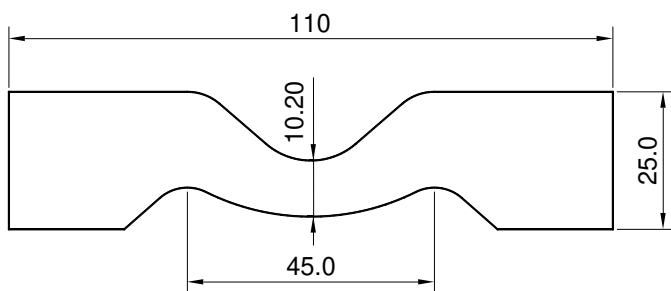
C0024 – Type N

- ASTM D638-02a-Type 3



C0024 – Type O

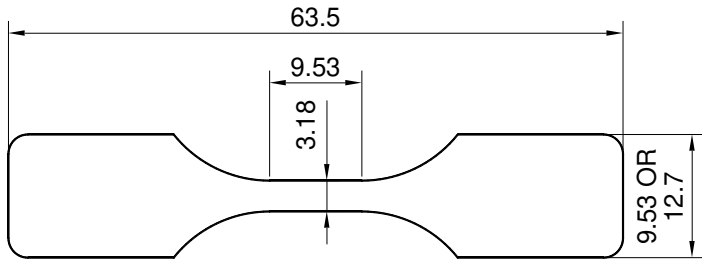
- ASTM D638-02a-Type 5



C0024 – Type P

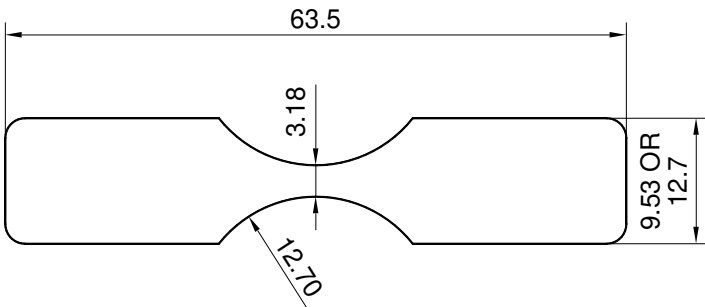
- DIN ISO 34-1
- K6301-Type A
- ASTM D624 – Type B

All dimensions in mm



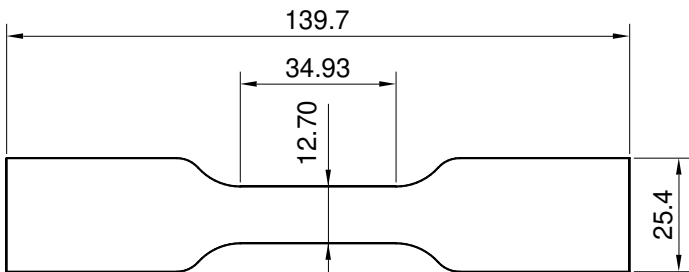
C0024 – Type Q

- ASTM D1822-Type L



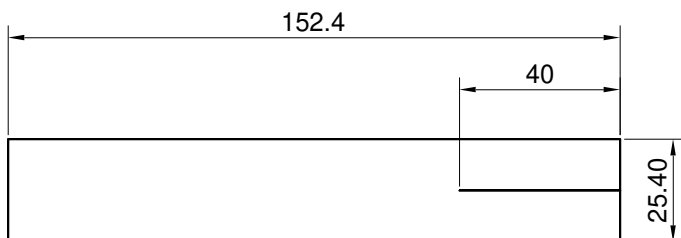
C0024 – Type R

- ASTM D1822-Type S



C0024 – Type S

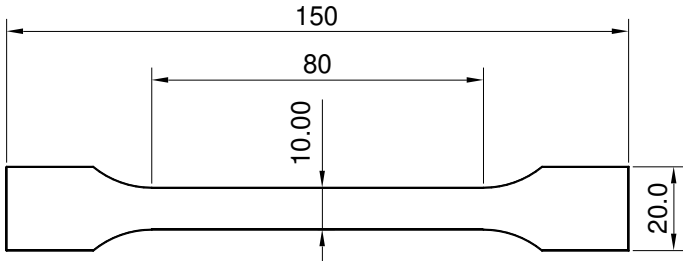
- ASTM D3574 – Type E



C0024 – Type T

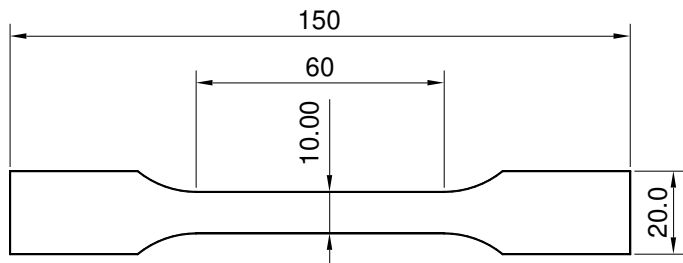
- ASTM D3574 – Type F
- DIN ISO34-1

All dimensions in mm



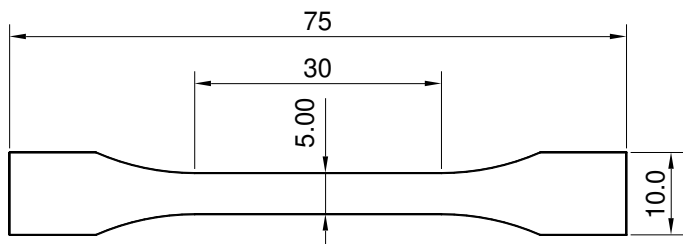
C0024 – Type U

- ISO 527-2 – Type 1A



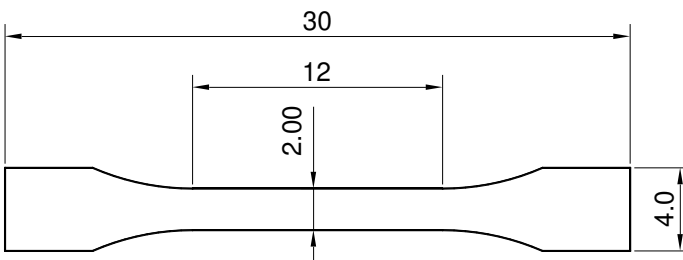
C0024 – Type V

- ISO 527-2 – Type 1B
- ISO 527-3 – Type 1B
- BS 2782-3 (Method 320B)
- BS 2782-10 – Type 1
- ISO 6259-3 Type 1



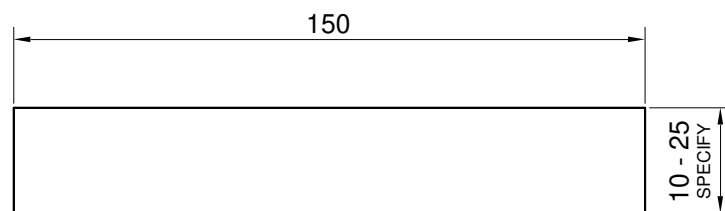
C0024 – Type W

- ISO 527-2 – Type 1BA



C0024 – Type X

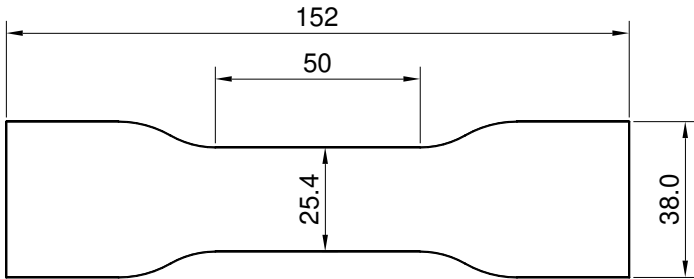
- ISO 527-2 – Type 1BB



C0024 – Type Y

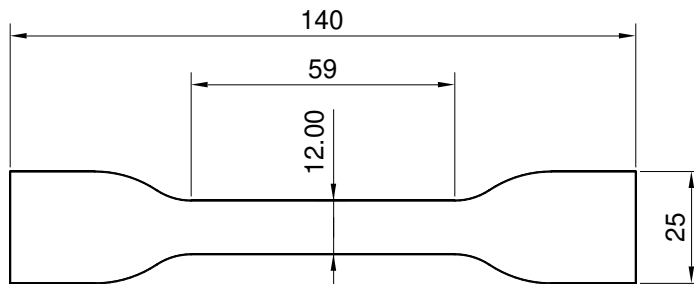
- ISO 527-3 – Type 2
- AS 1145.3 – Type 2

All dimensions in mm



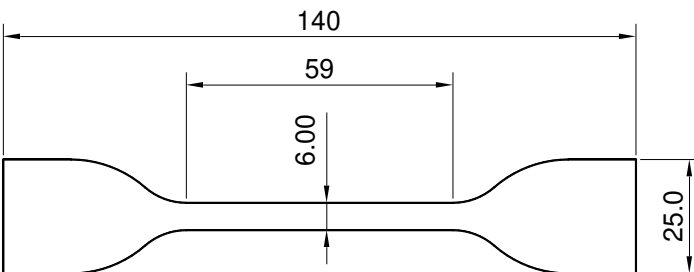
C0024 – Type Z

- ISO 527-3 – Type 4



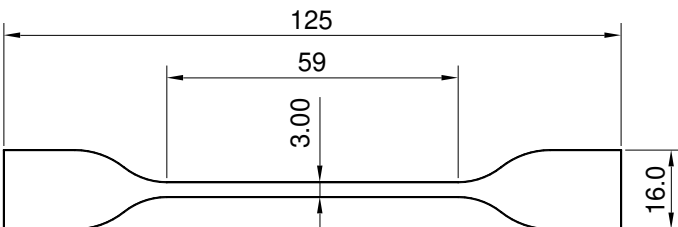
C0024 – Type Aa

- ASTM D412 – Type A



C0024 – Type Ab

- ASTM D412 – Type B



C0024 – Type Ac

- ASTM D412 – Type E

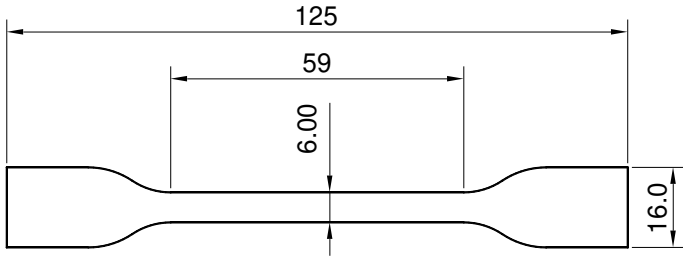
All dimensions in mm

Cutting Dies – Tool Steel

Model C0024

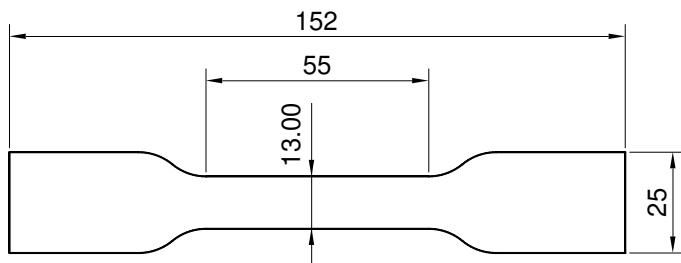
a measurable difference...

IDM[®]
instruments



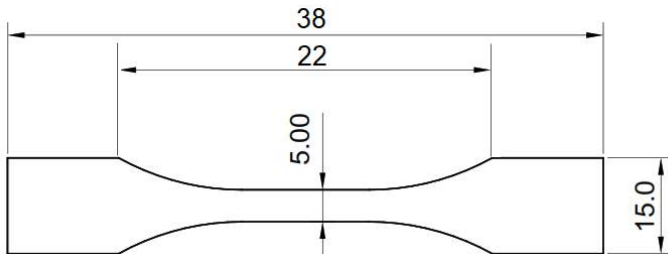
C0024 – Type Ad

- ASTM D412 – Type F



C0024 – Type Ae

- ISO 1798



C0024 – Type Af

- ASTM D1708
- ASTM D2116
- ASTM D4894
- ASTM D4895
- JIS K7137-2-A
- JIS K6935-2

** Other custom dies are available upon request*

All dimensions in mm