

# M150

## World's Smallest Stringpot

Ultra Miniature String Pot • Voltage Divider Output  
 1½-inch Stroke Range  
 Precision High-Cycle Potentiometer  
 Designed for Test and Space-Critical Applications



### GENERAL

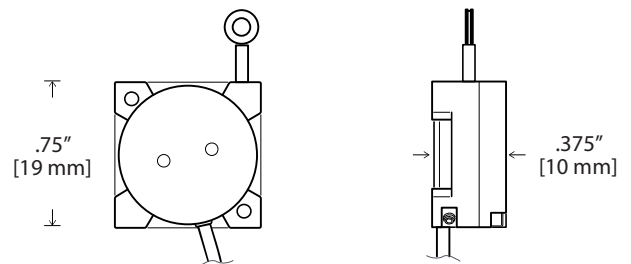
Full Stroke Range	0-1.5 inches
Output Signal Options	voltage divider (potentiometer)
Accuracy	± 1% full stroke
Resolution	essentially infinite
Sensitivity	897 – 924 mV/V full stroke
Measuring Cable	.014-inch dia. nylon-coated stainless steel
Measuring Cable Tension	4 oz. ±25%
Maximum Measuring Cable Acceleration	39 g
Enclosure Material	anodized aluminum
Sensor	conductive plastic precision potentiometer
Potentiometer Cycle Life	5 million cycles
Weight	0.5 oz. max.

### ELECTRICAL

Input Resistance	5K ±10% ohms
Recommended Output Signal Current	< 1µA
Recommended Maximum Input Voltage	20 VDC

### ENVIRONMENTAL

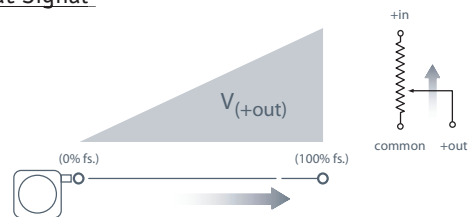
Enclosure	NEMA 12, IP 50
Operating Temperature	-40° to 185°F (-40° to 85°C)
Temp. Coefficient of Sensing Element	.0028%/°F (.005%/°C)
Vibration	up to 10 g at 30 – 2000 Hz max.



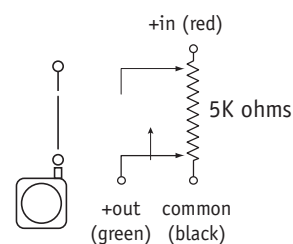
Introducing the world's smallest stringpot. The M150 is smaller than a thumbprint and occupies a tiny space of only .74 x .74 x .38 inches. With a full stroke measurement range of 1.5 inches, the M150 has been designed for many aerospace and automotive space-critical test applications such as throttle position and crash-test instrumentation.

The heart of the M150 is a precision high-cycle conductive plastic potentiometer that delivers a high-linearity voltage position feedback signal. With its rugged all aluminum construction, the M150 has been engineered for reliability and to provide quick, easy and hassle-free installation.

### Output Signal



### Electrical Connection

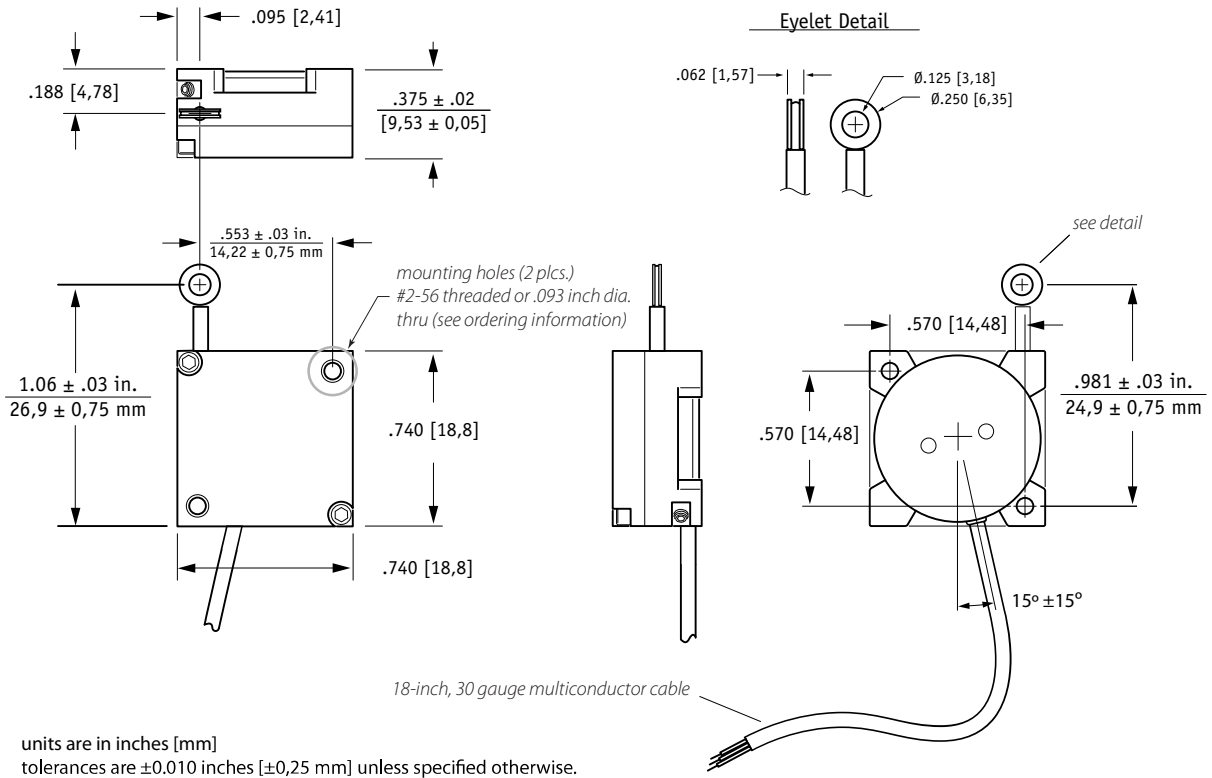


20630 Plummer Street • Chatsworth, CA 91311  
 tel: 800.423.5483 • +1.818.701.2750 • fax: +1.818.701.2799



celesco.com • info@celesco.com

Outline Drawing:



Ordering Information

**Model Number:**

**M150 - 4 - A - B - 5K - C1**  
*order code:*

Sample Model Number:

**M150 - 4 - H1 - E - 5K - C1**

- A** mounting hole style: .093 inch dia. thru
- B** measuring cable termination: eyelet

**Mounting Hole Style:**

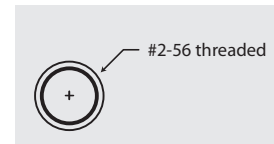
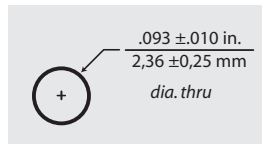
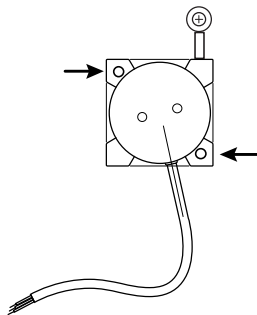
**A** *order code:*

**H1**

.093 thru

**H2\***

threaded



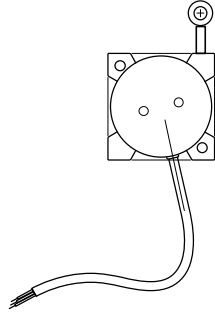
\*-includes: 4) #2-56 x 3/8" pan head mounting screws with washers

Ordering Info (cont.):

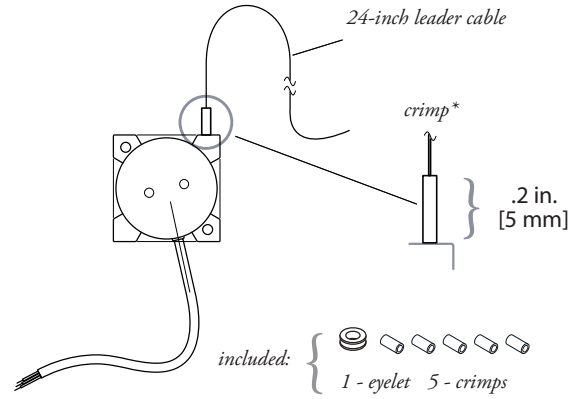
### Measuring Cable Termination:

ⓑ *order code:*

**E**  
Eyelet



**L**  
Leader Cable



\*note: crimped stop prevents leader cable from retracting into sensor body

version: 3.0 last updated: May 22, 2013