

This series machines are widely used for tension, compression, bending and shearing test of metal materials and also used for compression and bending test of non-metal materials, such as cement, concrete and more. Equipped with simple auxiliaries, it can be used for mechanical property testing of fastener, wire rope and components. They are perfect testing instruments of high quality that can be used for testing in universities, colleges, research institutions and industrial and mining enterprises. The machine is calibrated according to ASTM E4 and ISO75001. It can do many different kinds of tests according to ISO6892, ISO7438, ASTMA370, ASTM E8 and BSEN standards.



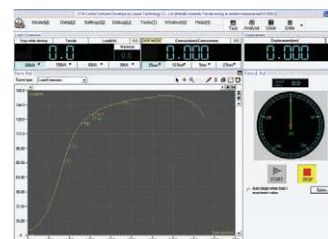
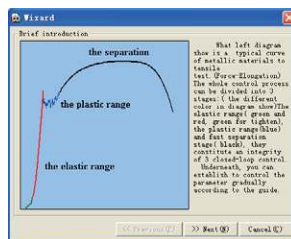
WEW-300,600,1000,2000

Specification

Parameters		WEW-300	WEW-600	WEW-1000	WEW-2000
Measuring range of force(kN)		6-300kN	12-600kN	20-1000kN	40-2000KN
Accuracy		±1% of indicated value			
Subsection of force		1,2,5,10			
Accuracy of deformation measurement		±0.5%F.S			
Clamping diameter for round specimen(mm)		φ10-32	φ13-40	φ13-φ60	Φ20-φ70
Clamping width of flat specimen(mm)		70	75	80	110
Clamping thickness of flat specimen(mm)		0-15	0-30	0-40	0-60
Testing space	Tension	650	650	700	1000
	Compression	550	550	650	900
Compression Platen size		170x170	170x170	204x204	204x204
Distance of bending by pass roll(mm)		30-320	30-450	30-450	30-500
Piston stroke(mm)		250			
Power supply		380/220v±10%, 50/60Hz, 3 phase			
Working environment		Room temperature 10℃ ~ 40℃ , relative humidity≤80%			
Overall dimension(mm)	Host machine	800x500x1950	950x630x2265	980x650x2450	1250x850x2800
	Control cabinet	1070x810x1730	1070x810x1730	1070x810x1730	1070x810x1730
Weight(Kg)		2100	2700	3500	7000



Features



- ✘ Control DSP card adopts PCI bus and fast response and transfer the data from the sensor to software.
- ✘ Data acquisition system consists of two high precision A/D conversion channel. The maximum resolution of 1/500000 . There is no subsection of all process , meanwhile, it can have 4 subsections according to customers' requirement.
- ✘ Built-in large scale CPLD programmable device with high-speed computation capability and real-time processing digital signal.
- ✘ Integrated dual routes precision instrument programmable amplifier, digital zero.
- ✘ Load, extension, and cylinder ram stroke three sensor input channel, it can do all kinds of material testing by any standard.
- ✘ Control software runs on Windows98/2000 /XP/Win7, Standard or Excel test report out put.
- ✘ Report format can be edition by user Real-time record and dynamic display test curve show in Load, Displacement, Extension, Stress, Strain and time. And the curve can be changed even in testing procession.
- ✘ Adopts human-computer interaction to analyze and count performance indicators of materials.
- ✘ Software can automatically analyze testing data, such as tensile strength, yield strength, modulus of elasticity, extend rate after rupture, non-proportional extend strength RP0.2, etc.
- ✘ Adopts standard database to manage test data and support batch test.
- ✘ Customer can define add test methods and fomular for his need.

Accessories

Description	WEW Sereis
Standard Accessories	PC, Printer Extensometer, Load Sensor, Encoder Hydraulic Pressure Sensor, Tension Test Accessories, Compression Test Accessories, Bending Test Accessories, Installation Tools
Optional Accessories	Shearing Test Accessories, Others according to order