

TESTING INSTRUMENTS FOR  
*A MEASURABLE DIFFERENCE...*

**iDM**  
instruments

# BOX COMPRESSION TESTER

MODELS: BC SERIES



**IDM-B0014-M1**

**IDM-B0010-M1,  
IDM-B0009-M1**

**IDM-B0011-M1**

## INTRODUCTION

IDM's Box Compression Testers are floor-mounted machines designed to evaluate packages and material under compressive loads. One platen is supplied with the machine which can be fixed or floated, as well as a base platen with the same dimensions. Box Compression Testers use a servo electric system to apply a precise linear motion and force.

## FEATURES

- Four precision load cells are used to measure the applied force
- Precise linear transducer measures the test sample deflection
- Strong A-frame construction.
- Motor driven ball screws, for fast and accurate operation, reposition the crosshead assembly.

## SOFTWARE AND REPORTING

The software used with the Box Compression Tester is the IDM Instruments Universal Tester. Software, having the following specifications:

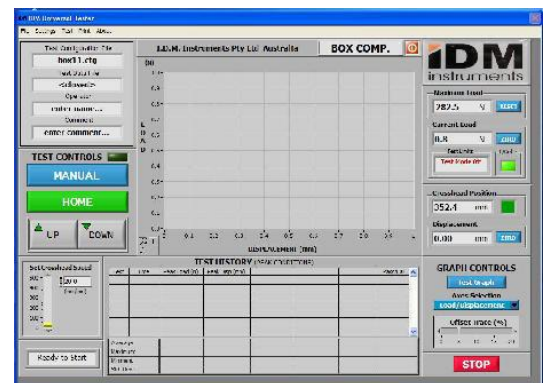
- Data sampling is adjustable from 1 – 1000 Hz
- Test parameters displayed with graph simultaneously
- Overlay display of data curve possible during test
- AS and ASTM Test Methods pre – programmed
- Other test programs can be programmed by the operator
- Calibration File to calibrate the unit
- Position, Load or Strain rate control
- Real time graphic display of data
- Selectable graphical display presentation
- Data can be read in Excel
- Out of range alarm and stop
- Auto return after a test is selected

### Data Output:

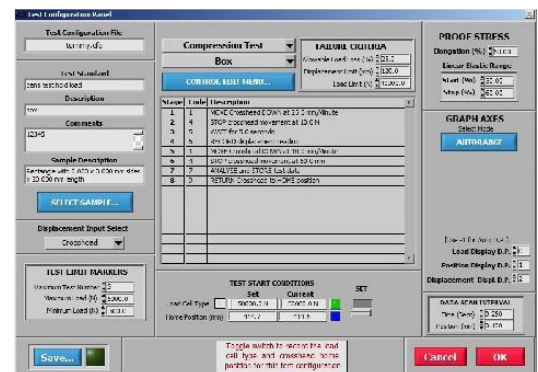
1. Force & Deflection
2. Digital display, peak load/position
3. Digital display & XY Graph
4. Statistical Output (on screen or print)
5. Print options: any test screen or statistics.

### Auto Set-up

- Auto Zero
- Preload
- Stop
- Position
- Home Position



Software Program



Test Configuration Panel

## SPECIFICATIONS

Model	IDM-B0009-M1	IDM-B0010-M1	IDM-B0011-M1	IDM-B0014-M1
<b>Model Capacity</b>	50 kN	50 kN	100 kN	10 kN
<b>Force Resolution</b>	0.01 x kN	0.01 x kN	0.1 x kN	0.01 x kN
<b>Force Accuracy</b>	± 1% F.S.			
<b>Maximum Test Area</b>	D: 1000 mm W: 800 mm H: 1200 mm	D: 1250 mm W: 1250 mm H: 1200 mm	D: 1250 mm W: 1350 mm H: 2500 mm	D: 100 mm W: 100 mm H: 1000 mm
<b>Position Repetability</b>	0.2 mm			
<b>Position Measuring Accuracy</b>	±0.1mm			
<b>Variable Test Speed</b>	0.1 – 250mm/min			
<b>Speed Accuracy</b>	0.5% F.S.			
<b>Crosshead Return Speed</b>	500mm/min			
<b>Platen Size</b>	1000mm x 800mm	1250mm x 1250mm		500mm x 500mm
<b>Voltage Supply</b>	220/240 VAC @ 50HZ or 110 VAC @ 60HZ (please specify while ordering)			
<b>Machine Weight</b>	550 kg	560 kg	580 kg	180 kg
<b>Machine Dimensions</b>	D: 1000 mm W: 1100 mm H: 2500 mm	D: 1250 mm W: 1350 mm H: 2500 mm	D: 1250 mm W: 1350 mm H: 2500 mm	D: 800 mm W: 1000 mm H: 1500 mm
<b>Packaged Weight</b>	950 kg	1340 kg	1340 kg	TBC
<b>Packaged Dimensions</b>	D: 1200 mm W: 1320 mm H: 2650 mm	D: 1700 mm W: 1700 mm H: 2650 mm	D: 1700 mm W: 1700 mm H: 2650 mm	TBC

## APPLICATIONS

- Box Compression
- Stack Testing
- Multi-box Compression

## STANDARDS

- AS1301-800s
- ASTM D642
- ASTM D4169
- TAPPI T804
- ISO 12048:1994

## WARRANTY AND CALIBRATION SERVICES

- **1 year Warranty**
- Our **Preventive Maintenance and Calibration (PM&C) program** has been designed to make the maintenance and calibration of your valuable testing equipment more cost effective by preventing breakdowns and downtime by regular calibration, service and replacement of defective parts. Talk to us about this today.