

TESTING INSTRUMENTS FOR  
*A MEASURABLE DIFFERENCE...*

**IDM**  
instruments

# COEFFICIENT OF FRICTION TESTERS

## COF SERIES



## INTRODUCTION

The Coefficient of Friction Testers have proven to be a fast, reliable and accurate method of determining coefficient of friction. Our range of COF Testers are used to determine the static and kinetic friction of plastic film, sheeting, paper and other sheeted material coatings. Their small bench top design makes it easy to use in a laboratory or setup out on the production floor for offline testing as needed.

### Legacy Model – COF (IDM-C0055-M1)

The legacy model C0055-M1 unit can measure Static COF (peak) from a resting position and continue to move testing surfaces in a relative motion to give an accurate kinetic COF (dynamic) result. This model features a stationary sled with a moving plane and also comes with the option of computer software to record data – see Software. Peel Testing can also be carried out on this unit – see Options



### C.O.F Tester with Variable Speed (IDM-C0055-M2)

The C0039-M2 offers the same capabilities as the C0039, with the added functionality of being able to test for round corner creases. Round corners can be tested with ease using the easily changeable Round Corner Jaw. Folds are still able to be bent at 90°, and the Round Corner Jaw allows leeway for rounded corners to bend as intended. Another added functionality of the C0039-M2 is the ability to adjust the Load Bar position via the Load Bar Adjustment Knob, allowing for a range of different test lengths of 5mm, 10mm or 15mm creases.

### C.O.F Tester with Variable Speed & Heated Platen (IDM-C0055-M3)

Along with the above-mentioned features of the C0039 M1 & M2 model, C0039-M3 includes a digital display. The real-time display screen is the latest addition to the Digital Stiffness Tester. The digital display is colour touch screen ensures simple operation making it convenient to check statistics, test reports and results.



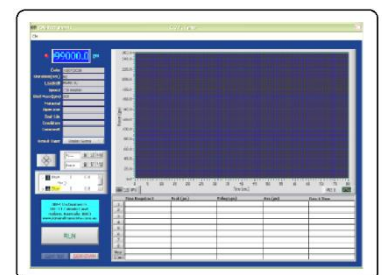
## FEATURES

- Static & Kinetic Friction
- 1 x Sled
- USB output
- 1 x cutting template
- Optional Touch Screen operation

## SOFTWARE & REPORTING

The C0055 range also has the option of a computer software package to record

- Dynamic real-time display
- Statistical analysis
- Results averaging
- Screen print out
- Data export to Excel
- Test identification entry
- Peak force value
- Static Point
- Kinetic average
- Adjustable data collection limits



## SPECIFICATIONS

Model	IDM-C0055-M1	IDM-C0055-M2	IDM-C0055-M3
<b>Speed &amp; Accuracy</b>	150 mm/min $\pm$ 0.2% of full scale	50-300 mm/min $\pm$ 0.2% of full scale	50-300 mm/min $\pm$ 0.2% of full scale
<b>Friction Function &amp; Selectable Units</b>	Static and Kinetic - kgF, lbF, N, COF, ozF, gF		
<b>Force Range</b>	1-10N (1 x 0.001kgF)		
<b>Sled Dimensions</b>	63mm x 63mm – Weight: 200 $\pm$ 2g		
<b>Plane</b>	150mm x 300mm		
<b>Travel Distance</b>	220mm		
<b>Communication</b>	USB		
<b>Cutting Templates</b>	1x Sled & 1x Moving Plane		

## OPTIONAL ITEMS

- **IDM-C0055-OP1** - COF Data Acquisition Software
- **IDM-C0055-OP2** - 180° Peel Fixture Rod
- **IDM-C0055-OP3** - Cutting Template for Carton board

## APPLICATIONS

- Flexible packaging
- Metal
- Printing
- Coatings
- Linoleum
- Foils
- Paper
- Rubber
- Composites
- Plastics
- Paper

## STANDARDS

- ASTM D1894
- ASTM D2534 (Coefficient of Kinetic Friction for Wax Coatings)
- ASTM D3330 (Peel Adhesion for Pressure Sensitive Tape 180°)
- ASTM D4521 (COF for Corrugated/Fibreboard)
- ASTM F88 (Seal Strength for Flexible Barrier Material)
- ISO 8295 (COF for Plastics)
- TAPPI T816 (COF for Corrugated and Paperboard)
- TAPPI T549 (COF for Uncoated Writing & Printing Paper)

## CONNECTIONS

- **Electrical:** 220/240 VAC @ 50 HZ  
or  
110 VAC @ 60 HZ  
(please specify when ordering)

## DIMENSIONS

### Packaged

#### IDM-C0055-M1

- H: 380 mm
- W: 470 mm
- D: 860 mm
- Weight: 20 kg

#### IDM-C0055-M2

- H: 430 mm
- W: 560 mm
- D: 960 mm
- Weight: 21 kg

#### IDM-C0055-M3

- H: 430 mm
- W: 560 mm
- D: 960 mm
- Weight: 24 kg

## WORKING ENVIRONMENT

- Temperature: -10°C to 40°C
- Humidity: 25% to 85%

## WARRANTY AND CALIBRATION SERVICES

- **1 year Warranty**
- Our **Preventive Maintenance and Calibration (PM&C) program** has been designed to make the maintenance and calibration of your valuable testing equipment more cost effective by preventing breakdowns and downtime by regular calibration, service and replacement of defective parts. Talk to us about this today.