



**Thwing-Albert
Instrument Company**

More Than a Century of Testing Solutions

IDM[®]
instruments

ProGage Thickness Tester

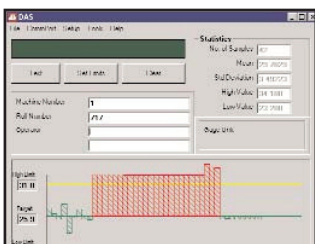
The ProGage utilizes the most advanced technology to quickly and accurately measure the thickness of sheeted materials such as paper, plastic film, tissue and toweling, nonwovens, and textiles. The ProGage features a dual speed pressure foot which enables it to perform up to 20 test cycles per minute (based on configuration) while maintaining a high degree of accuracy. The anvil design ensures excellent parallelism as well as zero stability and calibration.

A wide range of selectable presets for the measuring of speed distance and the pressure foot speed, as well as pressure foot diameters and weights, enables the unit to be configured to meet a specific test standard.

Capable of continuous or single testing with statistical analysis that is automatically performed. Average, high, low and standard deviation are computed, displayed and can be printed.

The ProGage can operate in conjunction with other instruments or be controlled remotely through a computer terminal via a RS-232 port.

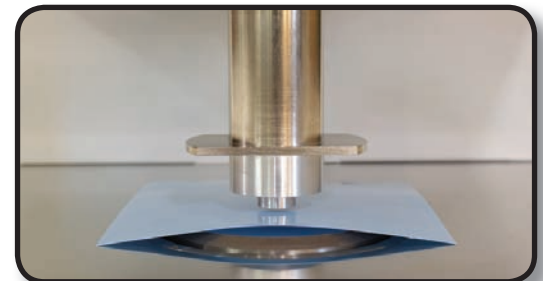
Data Acquisition Software



Data Acquisition Software (DAS) is a Windows® based optional software package that provides the ability to collect data and perform additional statistical analysis. DAS enables you to plot results real time against defined limits, generate semi-custom reports and export test data to other spreadsheet packages for further management.

Standard Pressure Feet

- Paper Foot: 0.630" (16mm) Dia, 50.33 kPa
- Paper Foot 0.630" (16mm) Dia, 100 kPa
- Film Foot: 0.250" (6.35mm) Dia, 51.71 kPa
- Tissue Foot: 1.406" (35.7mm) Dia, 2.0 kPa
- Nonwoven Foot: 2.221" (56.4mm) Dia, 0.5 kPa
- Other feet can be made to meet a wide variety of sizes and weights.



Features

- Auto push-button zero control
- Dual speed setting for test cycle increases samples measured per minute
- Rigid mechanical design ensures zero and parallel stability
- Stores up to 99 samples - average, high, low and standard deviation
- Single or continuous cycling mode
- Push-button unit conversion: mils, microns, millimeters, inches
- Adjustable travel height of pressure foot
- PC compatible - RS-232 port

Sample Feeder

An automatic strip feeder is available for cross-reel profiling and roll or strip feeding. It can accommodate samples up to 7 inches (177.8 mm) wide. The distance the sample is fed between tests can be set from 0.1 to 19.9 inches (2.5 to 505 mm). The feeder rate is 3.33 inches/sec (84.6 mm/sec).

Foot Switch

A foot actuated control enables the user to start a test with one press of the foot switch thereby keeping the hands free to insert test samples.

Performance Data - Measuring Ranges

Default Settings	40 mil (1 mm)	100 mil (2.5 mm)	200 mil (5 mm)	500 mil (12.7 mm)
Opening - mils:	80	150	220	520
Dwell Time:	2 sec	2 sec	2 sec	2 sec
*Accuracy:	±0.00004 in (±0.001 mm)	±0.00005 in (±0.0012 mm)	±0.00025 in (±0.0064 mm)	±0.0005 in (±0.013 mm)
*Parallelism:	±0.00004 in (±0.001 mm)	±0.00005 in (±0.0012 mm)	±0.00025 in (±0.0064 mm)	±0.0005 in (±0.013 mm)
Display Resolution:	0.00001 in	0.00001 in	0.00005 in	0.0001 in
	0.01 mil	0.01 mil	0.05 mil	0.1 mil
	0.001 mm	0.001 mm	0.005 mm	0.01 mm
	0.1 micron	0.1 micron	0.5 micron	1 micron

* Accuracy and parallelism specifications are subject to change based on pressure foot diameter and weight and may be adversely affected if a clean environment is not provided.

Special requirements are quoted on request.

Note: Machines that are configured for a particular specification, either customer or published, may differ from the above performance specification.

Physical Specifications

Dimensions

10 in W x 12 in D x 12.5 in H
(254.0 mm x 304.8 mm x 317.5 mm)

Net Weight

52 lb (23.6 kg)

Throat Depth

4.75 in (120.6 mm)

Gross Weight

57 lb (25.9 kg)

The ProGage Thickness Tester is capable of testing to a variety of standards:

ASTM D374, D1777, D645, D6988
TAPPI T411, BS3983, BS4817, EN20534
ISO 534 Preferred Method, ISO 3034, ISO 4593,
ISO 12625-3, DIN 53105, 53353, EDANA 30.4-89

Visit www.thwingalbert.com for a complete listing of industry standards.

Performance Data

Measurement Speed Distance

Range from 0.0005 to 0.500 in (0.012 to 12.7 mm)

Pressure Foot Anvil Size

Standard: 2.5 in (63.5 mm)

Available up to 4.5 in (114.3 mm) - meets EDANA method

Dwell Time

0.0 - 9.9 seconds (selectable)

Power Consumption

Operating Max: 18 Watts, Standby Max: 12 Watts

Pressure Foot Speed

15 Presets available between 0.026 - 0.416 in/sec
(0.660 mm/sec - 10.566 mm/sec)

Power Requirements

110/115 VAC ± 10% @ 60 Hz, 220 VAC ± 10% @ 50 Hz
or 240 VAC ± 10% @ 50 Hz

Pressure Foot Diameter Size

0.19 in to 2.2 in (4.83 mm to 56 mm) (special sizes available)
(Special applications allow interchangeable pressure feet option)

Specifications subject to change without notice.

IDM
instruments

10-11 Colorado Court, Hallam
Victoria 3803, Australia
Telephone: 61 3 9708 6885
Facsimile: 61 3 9708 6770
Email: idm@idminstruments.com.au
Web: www.idminstruments.com.au