

# Fabric Vertical Burn Tester

Model: F0007 - D

*a measurable difference...*

**IDM**<sup>®</sup>  
instruments

The Fabric Vertical Burn Tester measures the limited flame spread properties of vertically oriented textile fabrics and industrial products in the form of a single or multi component fabrics, when subjected to a small defined flame. A textile is held vertically in a frame. A small flame is used to ignite the specimen and the time is measured for the flame to spread up the specimen, as well as after-flame time and afterglow time. This method is not appropriate for materials that demonstrate extensive melting or shrinkage.



The instrument operates by applying a defined flame for 10 seconds to the surface or the bottom of the test specimen. Results are then recorded on the after-flame time, afterglow time, formation of debris, flaming debris or a hole in the test specimen.

The Gas Burner is designed to allow several different positioning, dependent on the angle of test required. Face test, Bottom-edge ignition, horizontal stand-by position, horizontal reach adjustment, and vertical stand-by flame height can all be achieved on the Fabric Vertical Burn Tester. Test specimens are cut to size with dimensions  $200 \pm 2\text{mm} \times 160 \pm 2\text{mm}$ .

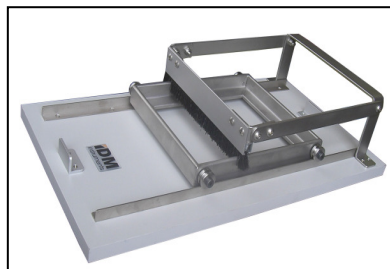
Timing devices are used with the Fabric Vertical Burn Tester to control and measure the flame application time, the after-flame time and/or the afterglow time. They are started automatically, and can be pressed manually as required.

## Applications:

- Coated textiles
- Quilted textiles
- Multi layered textiles
- Sandwiched textiles

## Features:

- Adjustable flame
- Easy fixing mechanisms
- Specimen Mounting Frame: 190mm x 150mm
- Gas Burner
- Gas Timer
- Timing Devices



*Brushing Device*



*Draft Enclosure*

# Fabric Vertical Burn Tester

Model: F0007 - D

*a measurable difference...*

**IDM**<sup>®</sup>  
instruments

## Benefits:

- Easy to use
- Fast results
- Accurate

## Standards:

- ISO 15025

## Options:

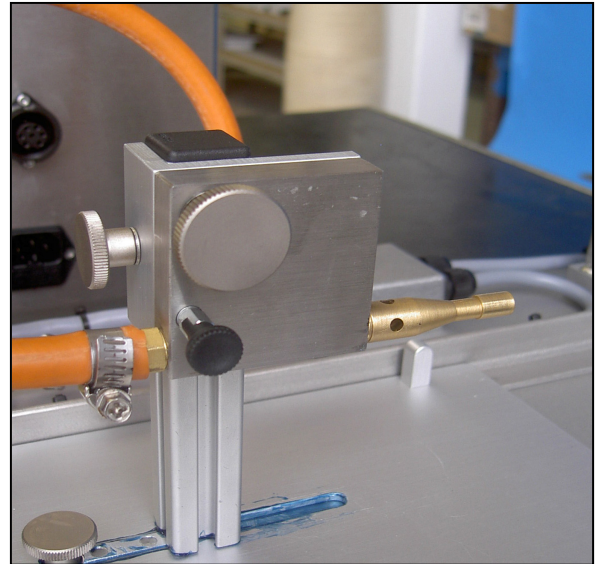
- Stainless Steel Draft Enclosure
- Brushing Device

## Connections:

- **LPG:** Commercial Grade:  
Propane, Butane or Butane/Propane mixtures
- **Electrical:** 220/240 VAC @ 50 HZ  
110 VAC @ 60 HZ  
*(please specify when ordering)*

## Dimensions:

- **H:** 400mm
- **W:** 700mm
- **D:** 540mm
- **Weight:** 45kg



*Close up of Gas Burner*